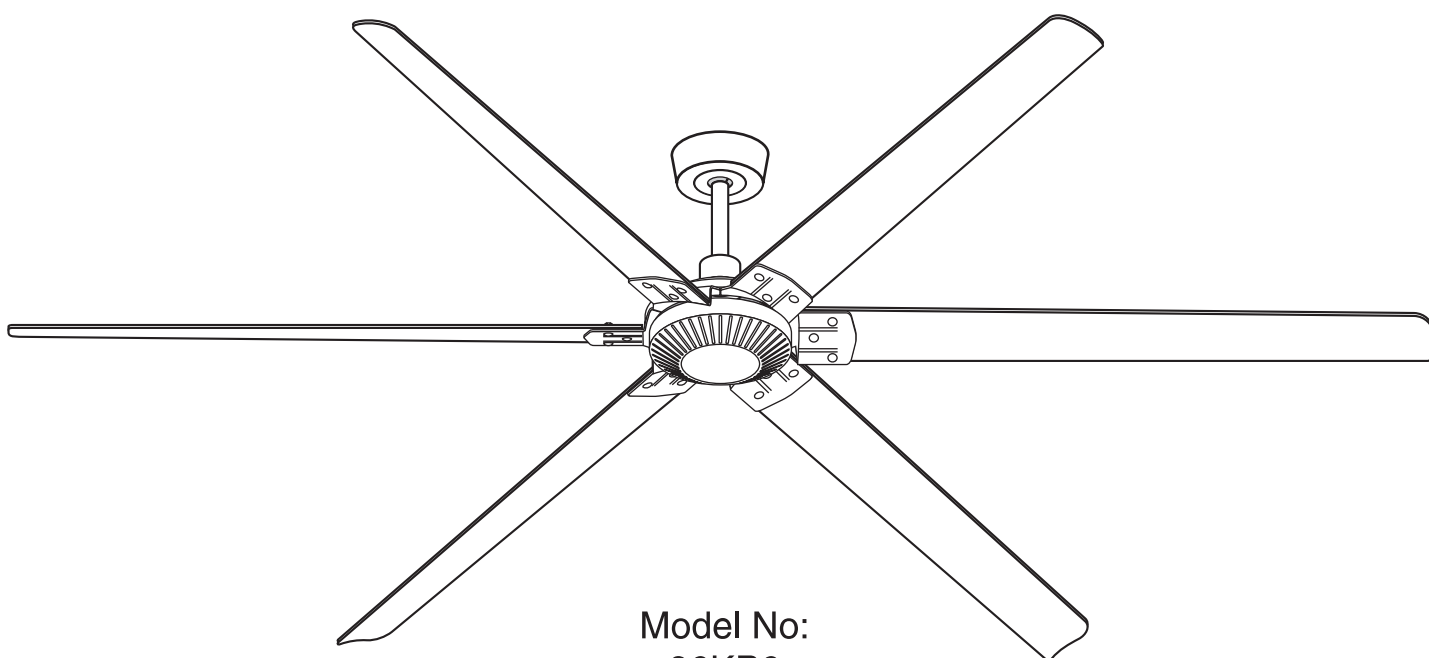


# Owner's Manual



**Grand Aire**



Model No:  
96KP6

These instructions contain 6 pages:

Page 1: Foreword

Page 2: Unpack and inspect parts contained, and pre-installation notes

Page 3: Hanging system Installation

Page 4: Wiring connections, Canopy installation and Blade installation

Page 5: Remote control instructions

Page 6: Remote pairing, Multiple fans, Button functions, and Wifi setup

Net Weight

KGS

LBS

**Toll Free 1-855-676-7247**

**WARNING:** Read and follow these instructions carefully and be mindful of all warnings shown throughout.

# READ AND SAVE THESE INSTRUCTIONS

**WARNING : TO REDUCE THE RISK OF FIRE, ELECTRICAL SHOCK, OR INJURY TO PERSONS, PLEASE OBSERVE THE FOLLOWING:**

- 1.] To ensure success of installation, be sure read these instructions and review the diagrams thoroughly before beginning.
- 2.] **To avoid possible electric shock, be sure electricity is turned off at the main power box before wiring.**  
All electrical connections must be made in accordance with local codes, ordinances and/or the National Electrical Code. If you are unfamiliar with the methods of installing electrical wiring and products, secure the services of a qualified and licensed electrician as well as someone who can check the strength of the supportive ceiling members and make the proper installations and connections.
- 3.] Make sure that your installation site will not allow rotating fan blades to come into contact with any object. Blades should be at least 7 feet from the floor when fan is in operation.
- 4.] If possible, mount ceiling fan on a ceiling joist - the joist must be able to support the motion and weight of the moving fan. If the fan will be mounted on a ceiling outlet box, a 4" x 2 1/8" deep METAL octagon box is required; one UL listed as "suitable for fan support". The box and its supporting members must not be able to twist or work loose. **DO NOT USE PLASTIC BOXES.** Installation on a concrete ceiling should be performed by qualified personnel.
- 5.] Blades should be attached after motor housing is hung and in place. Fan motor housing should be kept in carton until ready to be installed to protect its finish. If you are installing more than one ceiling fan, make sure that you do not mix fan blade sets.
- 6.] After making electrical connections, spliced conductors should be turned upward and pushed carefully up into the outlet box. The wires should be spread apart with the grounded conductor and the equipment-grounding conductor on one side of the outlet box and the "HOT" wires on the other side.
- 7.] Electrical diagrams are for reference only. Light kits that are not packed with the fan must be UL/ETL listed and should be installed per the light kit's installation instructions.
- 8.] After fan is completely installed, check to make sure that all connections are secure to prevent fan from falling and/or causing damage or injury.
- 9.] The fan can be made to work immediately after installation. The bearings are adequately charged with grease, so that, under normal conditions, further lubrication should not be necessary.
- 10.] The fan turns off and stops before reversing fan direction.
- 11.] This fan is suitable for sloped ceiling.
- 12.] This fan is electrically reversible.
- 13.] This fan is controlled by remote control.
- 14.] This fan is suitable for indoor use or damp location use.

**Unpack and inspect fan carefully to be certain all contents are included.**

Mounting Bracket →

Downrod Assembly →

Canopy →

Canopy Cover →

Yoke Cover →

Motor Assembly

**For Downrod:**

Flat Washer x4  
Spring Washer x4  
Clevis Bolt x2  
Hex Nut x2  
Cotter Pin x2

**Remote Control:**

Transmitter x1  
AE23 12V Battery x1  
Wire Nuts x4

**Hardware Bag**

**For Mounting Bracket:**

Flat Washer x4  
Wood Screw x4

**For Blade Set:**

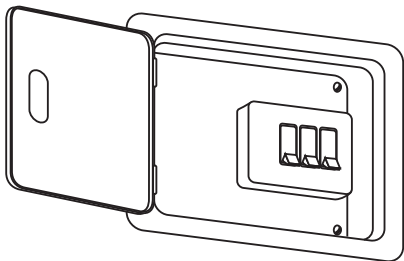
Flat Washer x19  
Rubber washer x 19  
Carriage Bolt x19  
Hex Nut x 19

Blade Set

**WARNING: blades should be at least 7 feet from floor**

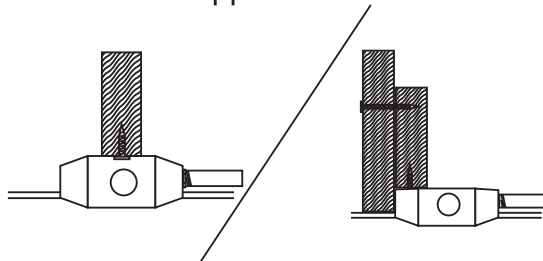
**Note 1:**

Turn off power at breaker box to avoid possible electrical shock.



**Note 2:**

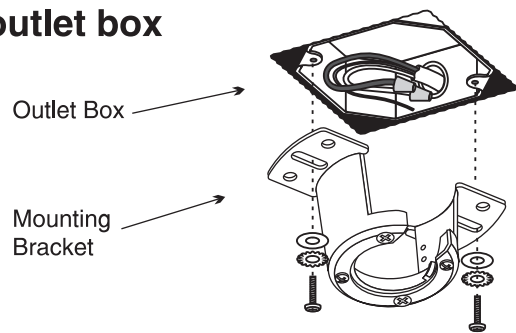
Use metal outlet box suitable for fan support.  
Outlet box must support 35 lbs min.



## 1. HANGING SYSTEM INSTALLATION

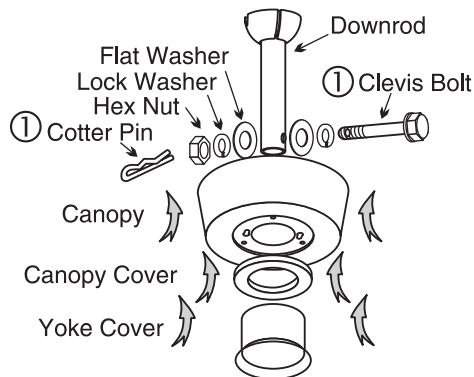
### 1A. Installing mounting bracket to ceiling outlet box

Install mounting bracket to outlet box in ceiling by using screws included with the outlet box and washers from the hardware bag.

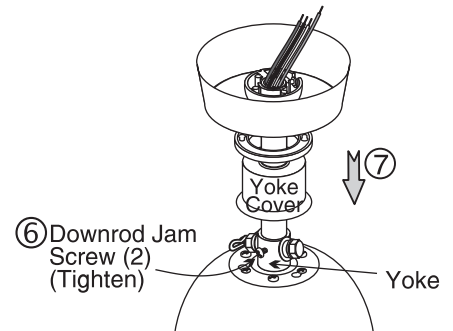
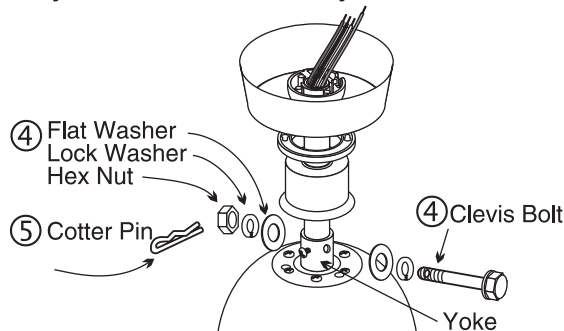


### 1B. Installing Downrod and Yoke

- ① Remove cotter pin, hex nut, washers and clevis bolt from the downrod.
- ② Insert downrod thru canopy, canopy cover and yoke cover, & feed motor wires thru downrod.
- ③ Loosen 2 downrod jam screws at yoke. Insert downrod assembly into yoke.

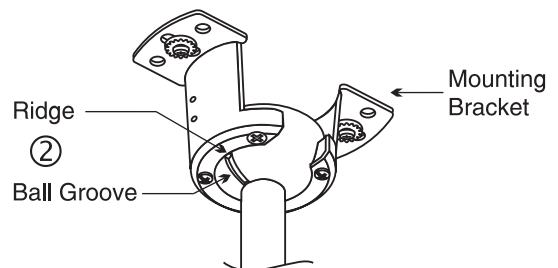


- ④ Insert the clevis bolt, with lock washer and flat washer, through yoke & downrod and secure
- ⑤ with flat washer, lock washer, hex nut and cotter pin.
- ⑥ Tighten both downrod jam screws to further secure downrod.
- ⑦ Pull down the yoke cover to cover yoke.



### 1C. Hanging the fan

- ① Lift fan assembly onto the mounting bracket.
- ② Rotate the fan so that the groove on the ball engages the ridge on the mounting bracket.

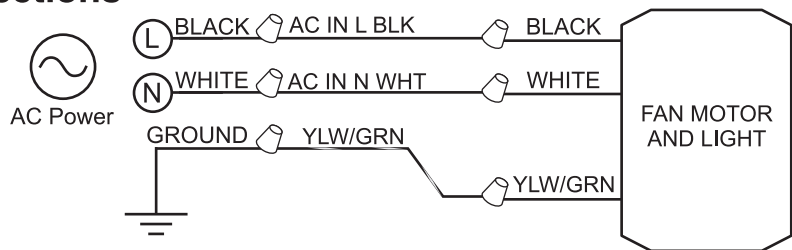


## 2. WIRING CONNECTIONS

### 3. Making electrical wire connections

Detailed instructions are enclosed with the remote.

*For convenience basic wiring connections are shown here*

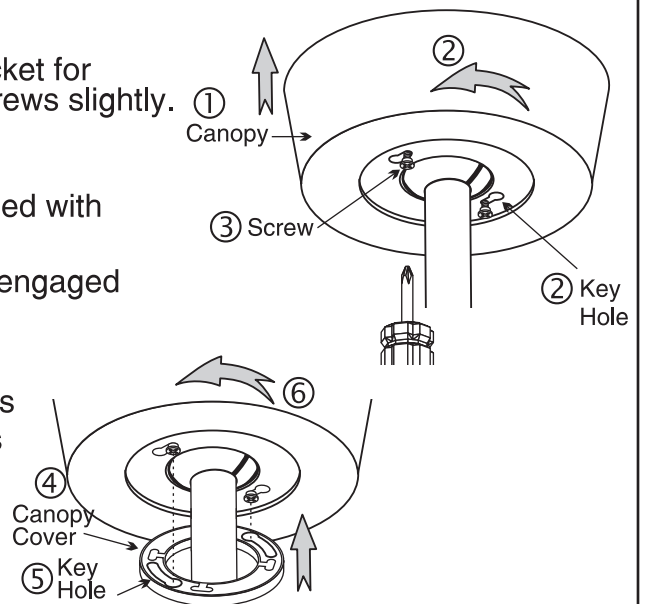


## 3. CANOPY INSTALLATION

### 3. Installing the canopy

Note: Two screws are pre-installed on mounting bracket for canopy installation. You will need to loosen these screws slightly.

- ① Push up canopy until the screw heads are engaged with the large end of the keyholes on canopy.
- ② Rotate canopy slightly until the screw heads are engaged in the narrow ends of the key hole.
- ③ Tighten both canopy screws.
- ④ Push up Canopy Cover, so that the screws heads are engaged with the large ends of the key holes in the Canopy Cover.
- ⑤ are engaged with the large ends of the key holes in the Canopy Cover.
- ⑥ Rotate Canopy Cover slightly until secure.

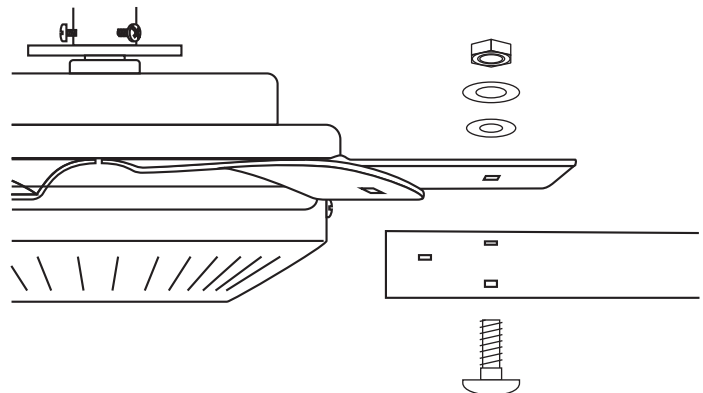


## 4. BLADE INSTALLATION

### 4. Installing the blades

- ① Raise blade to blade flange, aligning the holes in the blade to those in the flange.
- ② Secure blade to blade flange with three blade arm carriage bolts, rubber washers, flat washers and hex nuts.

Repeat for remaining blades.



## Maintenance

It is recommended to retighten all screws and bolts (blades, downrod, etc) after 30 days after installation and every six months.

It is recommended to wipe down all surfaces every few months with a clean dry cloth to keep the item clean

# DC POWER CEILING FAN REMOTE CONTROL

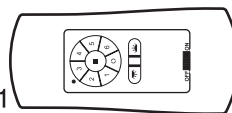
Important: This remote control is to be used for the control of a DC power ceiling fan on 120V 60Hz power supply only. Input power: 120V 60Hz. Output Power: 40W (max) for motor and 30W (max) for light.

Using an additional control on the same circuit will damage the fan. To reduce the risk of fire and electrical shock, do not use a dimmer switch to control fan speed.

Switch power off at the breaker or fuse panel before you begin installing the fan.

## Remote Control:

Transmitter x1  
AE23 12V Battery x1  
Wire Nuts x4



FCC ID: KUJCE10710

This device complies with part 15 of the FCC rules. Operation is subject to the following two conditions.

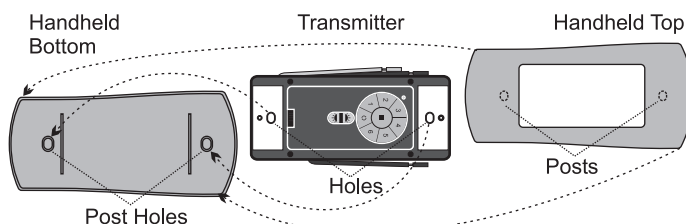
- (1) This device may not cause harmful interference, and
- (2) This device must accept any interference received, including interference that may cause undesired operation.

## REMOTE TRANSMITTER

### Handheld Use

- ① Insert the Transmitter into the Handheld Bottom as shown, aligning the large Holes of the transmitter to the Post Holes in the Handheld Bottom.
- ② Align the Handheld Top to the Handheld Bottom and press together carefully. The Posts will snap into the Post Holes

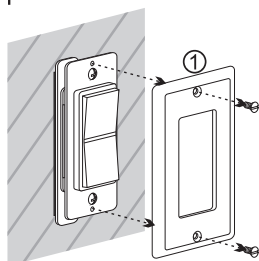
*Hint: Press the wires tightly against transmitter to keep them out of the way.*



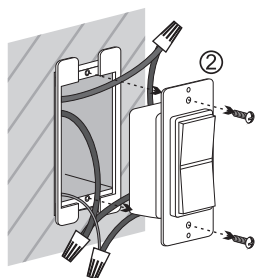
OR

### In-Wall Installation

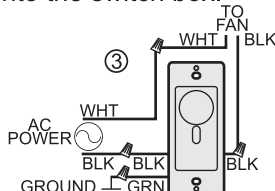
- ① Remove the screws holding the wall cover plate.



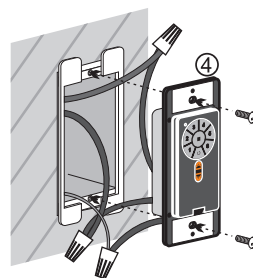
- ② Remove the two screws holding the old control in the switch box.



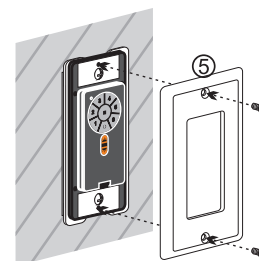
- ③ Disconnect the two wires and ground from the old control, connect the two wires and ground to the transmitter, and tuck the wires and connectors into the switch box.



- ④ Insert the two screws to hold the transmitter in the wall.

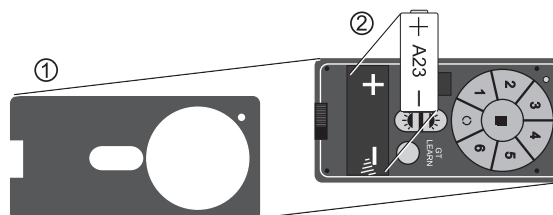


- ⑤ Position and install the wall cover plate with the wall plate screws.



## BATTERY INSTALLATION

- ① Remove the battery cover.
  - ② Insert the battery.
  - ③ Replace battery cover
- Battery Type: 12V A23/23A/23AE

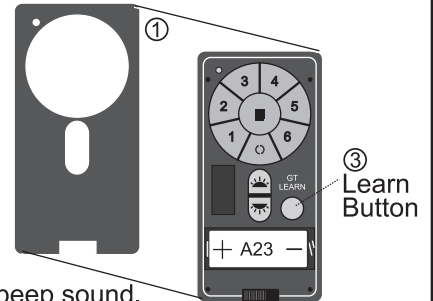


## PAIRING PROCESS

The Receiver and Transmitter are pre-paired at the factory. If you are installing just this one fan, no further pairing is required and you can skip to the next section.

If you wish to operate two fans from one transmitter or are replacing either transmitter or receiver, please follow the steps directly below to pair the receiver to the transmitter.

- ① Remove the Battery Cover
- ② Turn on power to the fan circuit at the breaker or fuse panel.
- ③ Within 30 seconds of restoring power to the fan, you must press the Learn button for about 2 seconds.



When the Receiver has successfully paired to the Transmitter, it will emit a beep-beep sound.

*Note: Do not press any buttons prior to pairing the receiver to the transmitter. Doing so will cause the pairing process to fail.*

*Note: To clear a previous pairing, press the Learn button for 12+ seconds, turn off power and start over.*

## MULTIPLE FANS

To install multiple fans operated by their own individual transmitter, simply do not run the pairing process; each fan is pre-paired to its own transmitter at the factory.

To install multiple fans to operate from one transmitter (up to 4 fans), perform the pairing process on both fans at the same time from a point between the fans. Must be within 30 feet of each fan.

If you have multiple fans paired to a single transmitter, and wish to separate them so each fan is operated by its own transmitter, you will need to spend a little more time. Be sure to turn power off at the circuit breaker or fuse panel before connecting or disconnecting wires.

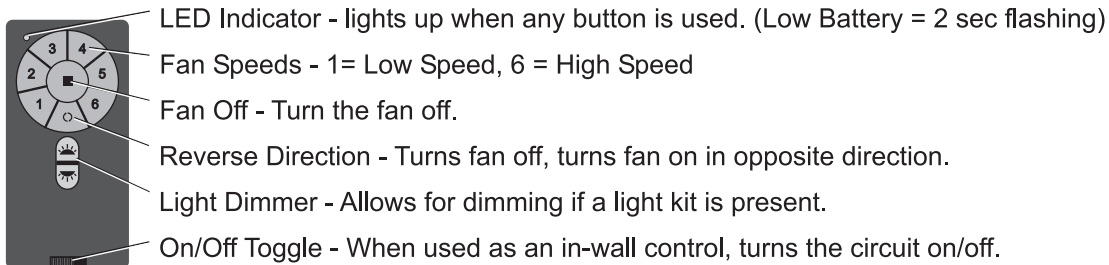
Wire up one fan,  
Turn on power and pair successfully,  
Turn off the power and disconnect that fan's Black AC L wire from the house's Black hot wire.

Wire up the next fan,  
Turn on power and pair it successfully to a different transmitter,  
Turn off the power and disconnect that fan's Black AC L wire from the house's Black hot wire.

Repeat as needed to pair up each fan.

Once all fans have been successfully paired to their own individual transmitter, wire up all of the fans and restore power a final time.

## BUTTON FUNCTIONS



## OPTIONAL WIFI SETTING

- 1.) Download the latest Smart Life app.
- 2.) Follow the instructions to setup a free account if you don't already have one.
- 3.) On your smart-phone, turn on Wifi and Location .
- 4.) Open Smart Life app
- 5.) Press +
  - a. Add Device
  - b. select Small Home Appliance
  - c. select FAN(WiFi)
  - d. select 2.4GHz Wifi and input password.
  - e. App will show "Confirm device blinking" page.
  - f. Press and hold power off button for 5 seconds for Wifi setup mode.
  - g. After 2 beeps, press "Confirm Device Blinking Rapidly" button in app.
  - h. Countdown to Connecting Device until success.

